

IP209 applied 1 coat overall. GLW15 Jujube White applied with a sponge (round pattern), and a brush (breaking linear pattern).



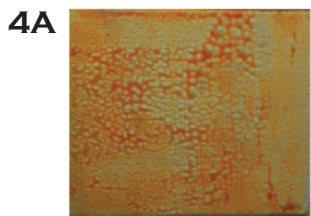
GLW32 Latte applied overall. IP202 and IP203 brushed, 1 coat each over the top of raw glaze. *When IP202 & IP203 are in close proximity of each other, they can form the "blush" that you see here.



GLW32 applied overall. Design is painted on top of raw glaze majolica-style, IP212 (wing), IP203 (breast), IP201 (branch), IP205 (grass), IP202 (details). Blushing effect from IP202 & IP203 seen here as well.



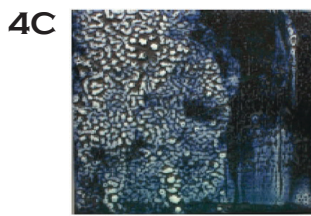
Tile has been textured: Wax Resist brushed on green tile, wash surface with sponge to 'eat-away' the surface. Bisque Fire. Tile made from Timberline Sculptural which is very groggy. IP208 applied and wiped back after bisque. GLW32 Latte applied over top.



IP203 applied 1 coat over entire surface. GLW23 White Froth brushed over the pigment in irregular coats to create different depths and interest when fired.



PG616 Buckwheat was applied overall. Leaf design waxed with sgraffito details carved through wax to create an inlay pattern. Left side: IP205 applied over top Right side: IP211 applied over top



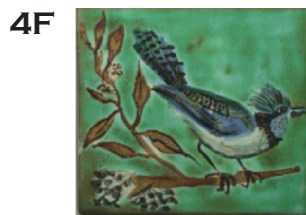
IP207 applied 1 coat overall. GLW15 Jujube White applied with a sponge (round, breaking pattern), and a brush (linear breaking pattern). Apply multiple coats of Jujube White and do NOT allow to dry between coats. Breaking pattern reflects thickness.



GLW12 Eggshell Wash was applied to entire surface. Majolica-style painting was done on top of raw glaze. IP204 (head & upper breast), IP203 (lower breast), IP210 (wing & details). Design was waxed. IP201 applied to background.



PG601 Perfect White applied overall. Circles were waxed to create pattern. IP210 applied to surface.



GLW37 Pure White Matte applied as base glaze. IP207 (bird head, back & wing), IP204 (branch & leaves), IP208 (throat & breast). Detail was waxed. IP206 applied to create background.



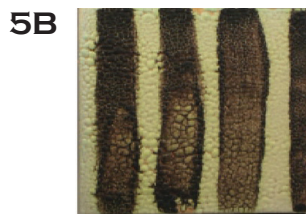
GLW03 Avocado Ice applied as glaze base. Bamboo pattern waxed and sgraffito detail carved through to base glaze. IP207 applied overall.



GLW32 Latte applied as glaze base. IP206 (vertical stripes) and IP207 (horizontal stripes) brushed over top.



PG631 Gold Dust (discontinued) applied as base glaze. Wax Resist design. Left side: IP202 over top Right side: IP203 over top



GLW23 White Froth applied as a base coat glaze. IP202 brushed in stripes over the top.