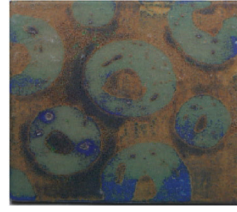
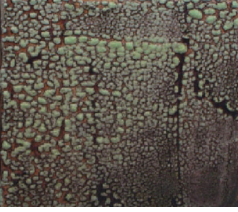


**1G**

PG636 Aegean Blue-Green applied overall on tile. Leaf design waxed out. When wax is dry, sgraffito leaf lines into the wax, to the glaze surface. IP203 is brushed over the entire surface. The "inlay" technique created with the sgraffito line concentrates the pigment.

**1H**

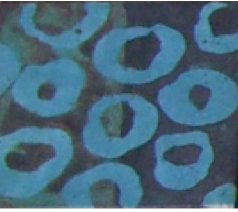
GLW47 Kalamata Black is applied to tile overall. Wax Resist was used to create circle design. IP211 was then applied overall.

**2A**

IP202 is applied in 1 coat over the surface of the tile. GLW23 is then brushed over the pigment in an irregular coverage to create more interest.

**2E**

PG642 Blizzard Blue was applied to tile overall. Wax was brushed onto the raw, unfired glaze to create the bird pattern. Sgraffito used on bird detail through the wax. IP201 was applied and wiped back in detail area. IP207 was brushed over entire background.

**2B**

GLW25 Aqua Gemstone applied to the entire surface of the tile. Circles were waxed out, allowing the glaze color to create a pattern. IP211 was applied over the left side of the tile. IP210 was applied over the right side of the tile.

**2F**

PG636 Aegean Blue-Green applied to tile overall. Leaf design was waxed and sgraffito lines carved through the wax to glaze below. IP202 applied over the top.

**2C**

GLW32 Latte was applied to the tile overall. Wax Resist was brushed onto the glaze to create a leaf pattern. Used Sgraffito method for lines in the leaves, through the wax, to the glaze layer. Applied 1 coat IP210 over surface.

**2G**

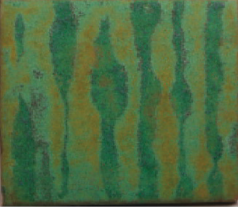
PG642 Blizzard Blue applied to tile overall. X's were waxed to create pattern. IP212 applied over top. \*Note - the high metallic surface of this tile does not render it safe for food. Use as a decorative surface only!

**2D**

PG634 Scotch Pine was applied to entire surface of the tile. IP207 was stamped over the raw glaze with a sponge stamp. It's best to brush a thin coat of pigment onto the stamp and lightly touch the stamp to the surface. Stamp a few times before reapplying your pigment.

**2H**

IP211 applied to entire surface. GLW15 Jujube White has been both sponged (on the left) and brushed (on the right) over the surface.

**3A**

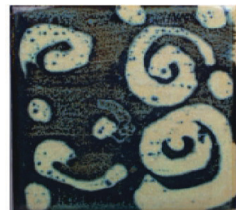
GLW08 Copper Patina applied overall. Wax Resist lines brushed on to form pattern. IP203 applied to overall surface.

**3C**

GLW12 Eggshell Wash applied to tile. Pigments applied majolica-style. IP208 (wing), IP204 (back), IP203 (breast), IP209 (leaves), IP201 (branch), IP210 (details). Design was waxed. IP212 applied to create background.

**3B**

PG636 Aegean Blue-Green applied overall. Leaf design waxed, with sgraffito lines carved for detail through wax. IP211 applied to entire surface.

**3D**

PG631 Gold Dust (discontinued) applied overall. Swirls were brushed with Wax Resist. IP207 applied over the entire surface.