

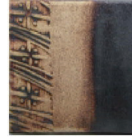
IP201- IP212 brushed 1 coat - no glaze - fired to ^6



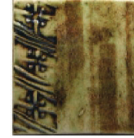
IP205 Wiped back - unfired



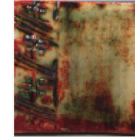
IP205 Fired - no glaze



IP205 with PG629



IP205 Wiped back w/GLW32



IP205 Wiped back - texture w/GLW32



Use Interactive Pigments under your Glazes



IP207, 203, 205 under PG630

Before & After Firing - IP202 wiped back/IP208,203,201,204,PG629

IP208 under PG633

IP202 under GLW49

IP207 under GLW53

INTERACTIVE PIGMENTS can be used in many ways. It is important to know that they will behave differently with each clay body and glaze that you try them with, so - TEST! All of the tiles pictured here were made with Georgies Timberline ^6 clay, a stoney gray/white and vitreous body.

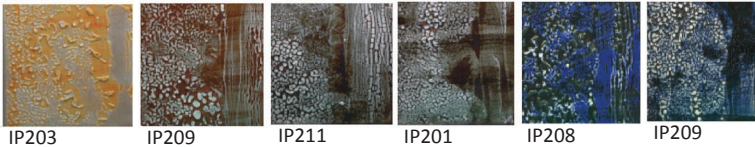
Use INTERACTIVE PIGMENTS under your glaze, on ^04 bisque as a solid coverage, or as a wipe-away-antique effect, (which is especially attractive when you have created texture and want to highlight that element).

Use INTERACTIVE PIGMENTS on top of your raw glazes as decorative brushstrokes - with wax resist - to create a pattern or design. Enhance the wax design by carving through the wax which will create an "in-line" channel for the pigment.

Use INTERACTIVE PIGMENTS over the raw glaze as a MAJOLICA technique, in a painterly fashion, which overlap and utilize brushwork.

Create your own sponge stamps and use them either under or on top of the glaze. It's best to brush your sponge stamp with pigment as the sponge can absorb too much.

When wiping back the pigment or handling pieces with large surfaces covered in pigment, always wear protective gloves. It is also very messy!



IP203

IP209

IP211

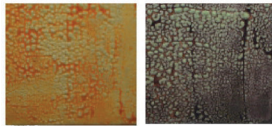
IP201

IP208

IP209

Use INTERACTIVE PIGMENTS under specialty glazes for unique effects. GLW15 Jujube glaze (top row) beads when applied with a sponge, and forms a linear pattern when applied with a brush.

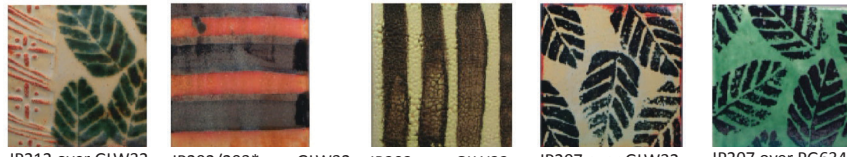
GLW23 White Froth (left) behaves differently on each clay body, but will appear smoother when more thinly applied, puffer and more breaking when applied thickly.



IP203

IP202

DECORATE or DESIGN with INTERACTIVE PIGMENTS on top of raw glazes. Use your favorite brushes; natural hair or sumi-style works well, and apply with one stroke. Feel free to thin the pigment if needed. For sponge stamps, brush a thin coat of glaze/pigment onto the stamp.



IP212 over GLW32

IP202/203* over GLW32

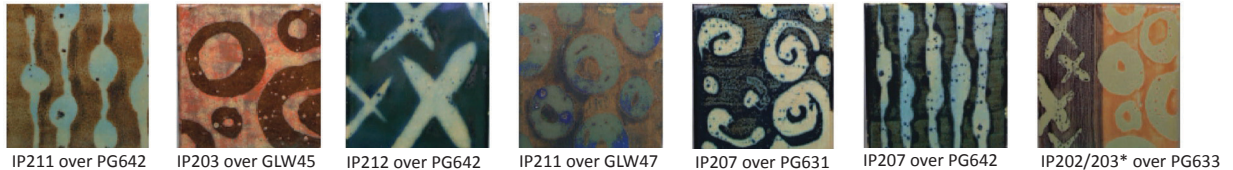
IP202 over GLW32

IP207 over GLW32

IP207 over PG634

*When IP202 & IP203 come into contact with each other, they often create a rosey blush not evidenced when used independently.

Using **WAX RESIST** helps highlight the glaze of choice, creating design, and allowing the INTERACTIVE PIGMENTS to flow and pool, varying the thickness, adding more dimension and interaction with the underlying glaze. The wax we use is Premium Wax Resist.



IP211 over PG642

IP203 over GLW45

IP212 over PG642

IP211 over GLW47

IP207 over PG631

IP207 over PG642

IP202/203* over PG633

GLAZE INLAY is a fun technique that allows you to create crisp detail into a glazed area. Base coat your piece with your glaze of choice. Apply wax overall or in a design feature, then with a sgraffito tool, scratch through the wax. Apply pigment over the entire surface.



IP205 over PG633

IP211 over PG633

IP206,211 over PG616

IP210 over GLW32

IP207 over GLW03

IP207 over PG642

IP203 over PG633

In true **MAJOLICA-STYLE**, get painterly with the INTERACTIVE PIGMENTS. Your best choice of glazes are ones that stay firm and non-moving. Use watercolor or sumi-style brushes and apply the pigments onto your raw glaze, only one stroke is needed. Layer, wax out or sgraffito though your color to create the level of detail you desire. The glaze you work on will express the final outcome.



IP212,206,208, 204,210,202 over GLW12

IP202,203*,212, 201,205 over GLW32

IP207,202,204,201 bird & branch background IP206

IP212, 210 over GLW32

IP202,210,203: wax & sgraffito, IP206 background/over

IP205 wiped back under the glaze. GLW12 applied IP202,203,210 over

Great Choices for **MAJOLICA:**
 PG601 Perfect White
 GLW32 Latte
 GLW37 Pure White Matte
 GLW12 Eggshell (overs create a porcelain-like finish)