

FOAMY CRAZY CRYSTAL GLAZES

Have a great time making unique crystal combinations with a little imagination, some SC16 Stroke & Coat Cottontail White underglaze, and ... a healthy dollop of shaving cream! Start off with choosing two Crystal Glazes of complimentary colors. One of them will be your basecoat color.

How to Apply Crystal Glazes:

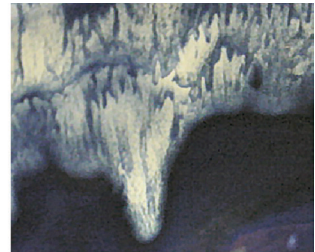
Your application technique will vary, depending on whether your basecoat Crystal Glaze has large or small crystals.

Large Crystals: Do not stir crystals into glaze until the third coat. Apply 2 coats from the glaze at the top of the jar, then mix the crystals from the bottom of the jar into the glaze and apply the 3rd coat. Make sure to place larger crystals to the top of the piece you're working with. They run as they melt!

Small Crystals: Mix the crystals from the bottom of the jar into the glaze for all 3 coats. Do not let crystals collect toward the bottom of the jar.



IN1075 Cobalt Blue with SC16



Inside of bowl detail

Mixing the Shaving Cream:

1. You can use any shaving cream that sprays foamy out of the can, like Barbasol. Gel creams, like the Edge brand, will not work... at least not as well.
2. In a small container, mix SC16 with shaving cream in a 4:1 ratio.
3. When the mix is pasty, apply it to the top of your piece with a palette knife or #4 round brush. This mix will RUN, so keep it to the top of your piece.
4. Mix the second Crystal Glaze thoroughly. Use a #4 round brush to apply 1 or 2 heavy coats to the top of the piece.

Firing - Let the glazes dry. Stilt and fire to **witness cone 06**.



CR904 (discontinued) with SC16



Inside of bowl detail

Recommended Crystal Glaze Pairings:

- CG717 Pistachio with CG987 Tree Frog
- CG963 Lemon Lime with CG1001 Gogh Iris
- CG718 Blue Caprice with CG788 Dutch Enamelware
- CG958 Lagoon Blue with CG785 Royal Fantasy
- CG974 Bloomin Blue with CG962 Blue Azure
- CG753 Sassy Orange with CG954 Wildfire
- CG780 Mystic Jade with CG716 Pagoda Green
- CG980 Coral Puff with CG984 Ladybug
- S2712 Monsoon Seas with S2714 Lotus Blossom
- S2727 Poppy Fields with CG977 Ink Spots
- S2704 Plum Jelly with S2716 Celestial Blue
- S2725 Safari with S2726 Cheetah

This technique will also work
with Envision Glaze combinations!