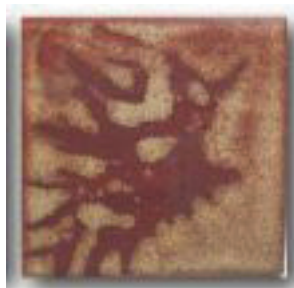




**GLW22 Rusty Nails**  
under waxed design  
**GLW36 NW Woods**



**GLW22 Rusty Nails**  
under waxed design  
**GLW32 Latte**



**GLW22 Rusty Nails**  
under waxed design  
**GLW30 Cinnamon**



**PG616 Buckwheat**  
under  
**GLW42 Blueberry &  
GLW08 Copper Patina**

As you can see, this is just a beginning of the possible combinations and possible firing schedules; although I will stay with these two for a while longer. In my tests I was working with a safety net ... trying to stay within a known set of glazes that were well behaved, not having a tendency to run on a vertical surface (with the exception of GLW03 Avocado Ice).

I live with the mantra taught to me by Pat Horsley: "Everything Matters and Nothing is the Same". So with any testing that you do, the clay you use, your glaze application/thickness and the firing schedule - it all matters. Be sure to protect your kiln and shelves and expect to be surprised.



**GLW34 Ohata**  
Fired to ^6 medium  
speed with no hold



**GLW34 Ohata**  
Fired Alternate #1  
schedule



**GLW34 Ohata**  
Fired Alternate #2  
schedule

I'll leave you with this direct comparison of our Ohata glaze. Firing truly has a significant impact on the results one can achieve and expect.

**BE SURE TO TEST FOR YOUR INDIVIDUAL RESULTS!!**