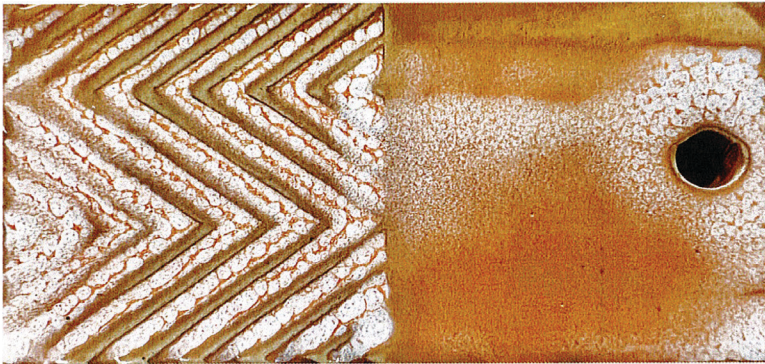


NEW TD514 Milk & Honey ^5-6 Glaze



TD514 Milk & Honey glaze is many things! As we have been unable to get a very popular glaze that comes from Amaco, we have explored the possibility of creating our own version of this lovely glaze that offers a wide variety color responses and interactions. It can be golden honey yellow to a creamy white with flecks of orange. The thickness of your application as well as the temperature and speed of your firing make a difference. The 2 cups above illustrate the variations; on the left it was fired to ^5, on the right fired to ^6. The max temp is ^6, as you will see in some of our samples, it will move!

Two more ^5 vs ^6 variations as combos:
 On the left ^5, on the right ^6.

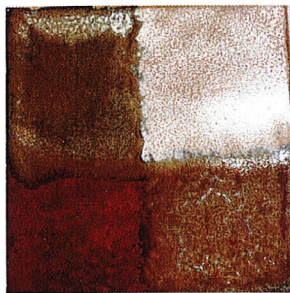
Left is PG611 Grape with
 TD514 Milk & Honey over the top.

Right is PG602 Incredible Black with
 TD514 Milk & Honey over the top.

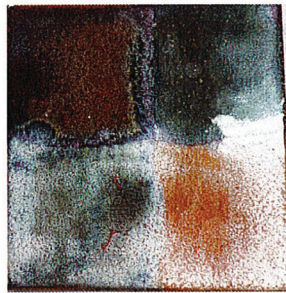
The clay is Silver Falls Porcelain.



NEW Combo Mambos with TD514 Milk & Honey ... each of the two glazes can be viewed over and under.
 The diagonal corners show each 'true' glaze color.



GLW34 Ohata



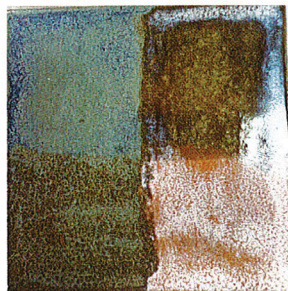
GLW46 Northern Lights



PG607 Nassau Blue



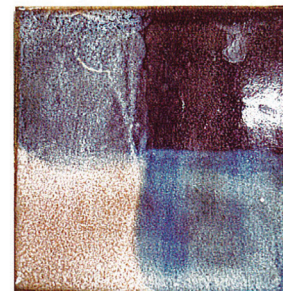
PG648 Maroon



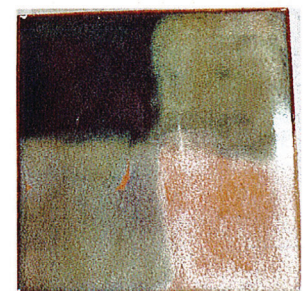
TD510 Halo Purple



PG602 Incredible Black

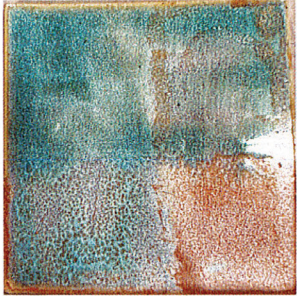


TD511 Purple Velvet



TD503 Tidal Pool

MORE Combo Mambos with TD514 Milk & Honey ...



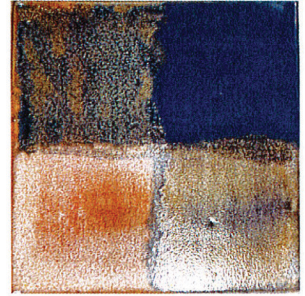
PG642 Blizzard Blue



TD504 Blue Dusk



GLW30 Cinnamon

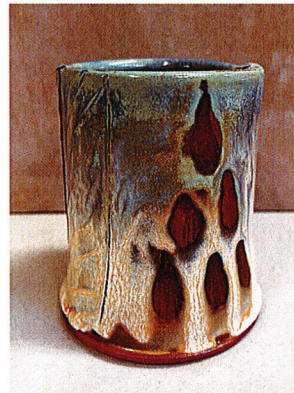


GS409 Purple

These 3 pots use the TD514 Milk & Honey **UNDER** the top glaze ... you can see the flow!



PG602 Incredible Black
CC535 Trail Mix Cinnamon



TD510 Halo Purple
CC552 Mazama Red



GLW46 Northern Lights
CC535D Dark Chocolate



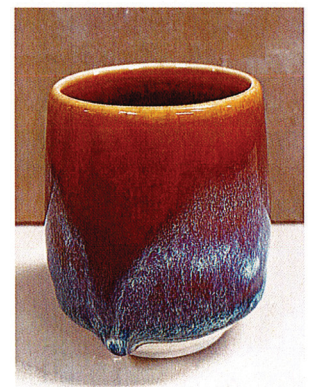
TD514 Milk & Honey OVER
GLW46 Northern Lights
CC529 White Salmon Clay



TD510 Halo Purple OVER
TD514 Milk & Honey
CC529 White Salmon Clay



TD514 Milk & Honey OVER
GLW46 Northern Light
-- heavy application --
CC529 White Salmon Clay



TD514 Milk & Honey OVER
PG651 Mottled Brown
CC519 Silver Falls Clay