

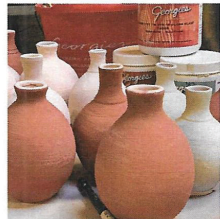
# TYE DYE - SPIN ART

Fun-Easy-Retro with Great Glaze Response ...  
Expect the Unexpected!



You can do Tye-Dye Spin Art on flat tile, plates, platters or 3D forms (such as bottles and cups), it's up to you and your imagination.

We used our wheel for glazing! The spin of the wheel creates the patterning, but the combos can be reproduced by any method of layering glazes you may choose.

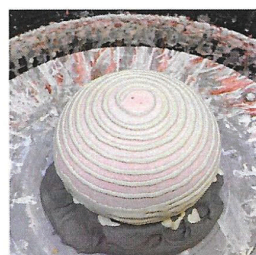
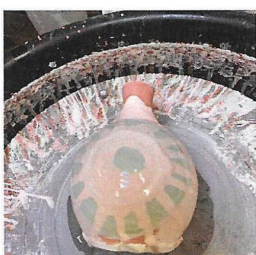
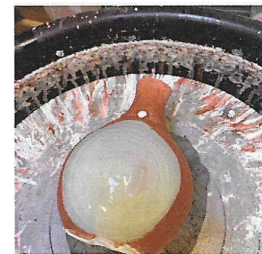
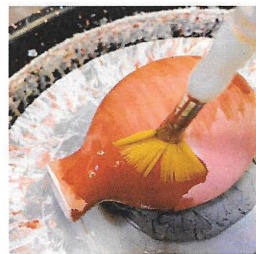
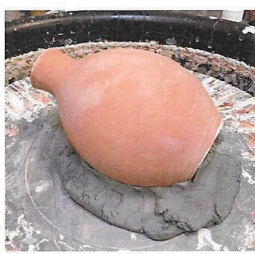
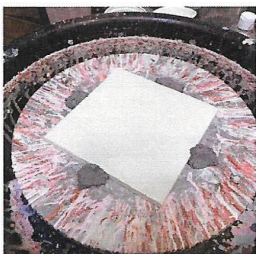


### Here's what you'll need:

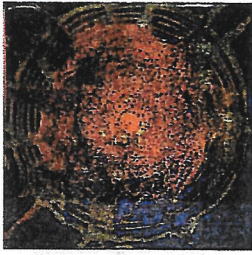
1. Your piece with 2 brushed coats of your choice of a base glaze.
2. "Opening" media to allow glaze movement.
3. Brushes and glaze applicators.

Tiles or flat pieces are the easiest form to practice with. Before you begin you will want to thin your media (such as Amaco Gum Solution), with water. I found 2 parts water to 1 part gum worked well. Both the glycerin and soap worked well with only a wet brush.

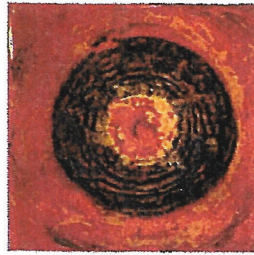
- Fix your tile or 3D form to your wheel with soft clay as if you are centering to trim.
- Brush your media over the area you intend to apply your contrasting glaze for design.
- You can brush your first glaze choice over part or all of the exposed area you prepped with the opening solution. You can alternately spiral it on with your wheel on slow speed ...this is just about the application.
- Your third color choice will be spirally applied ... again do this slowly.
- Now you are ready to "Spin" your design.
- Rev up your speed, stop and look. While your glaze is still fluid you have a chance to add glaze or continue to spin.



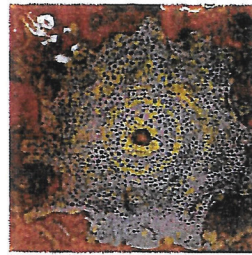




Base TD502 Galaxy Blue  
TD508 Cherry Fizz  
TD512 Pistachio



Base TD509 Rose Gold  
TD502 Galaxy Blue  
TD512 Pistachio  
TD513 Orange Neon



Base TD503 Tidal Pool  
TD511 Purple Velvet  
TD512 Pistachio



Base TD504 Blue Dusk  
TD511 Purple Velvet  
TD508 Cherry Fizz



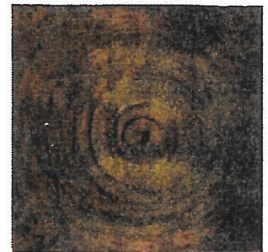
Base TD507 Seafoam  
TD506 Lichen Green  
TD513 Orange Neon



Base TD509 Rose Gold  
GS409 Purple Satin  
TD513 Orange Neon  
TD512 Pistachio



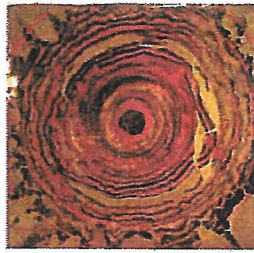
Base TD510 Halo Purple  
TD506 Lichen Green  
TD507 Seafoam



Base TD503 Tidal Pool  
TD507 Seafoam  
TD512 Pistachio



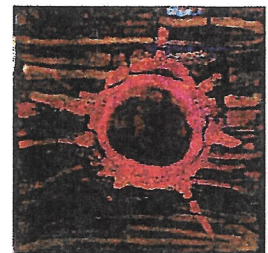
Base GS405 Rouge Red  
TD511 Purple Velvet  
TD507 Seafoam



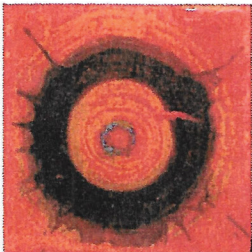
Base TD506 Lichen Green  
TD505 Twilight Blue  
TD508 Cherry Fizz



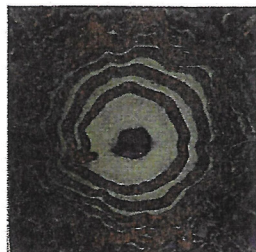
Base TD502 Galaxy Blue  
TD507 Seafoam  
TD513 Orange Neon



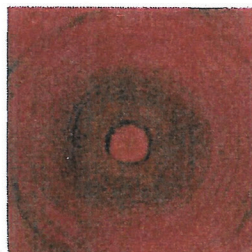
Base TD502 Galaxy Blue  
TD512 Pistachio  
TD508 Cherry Fizz



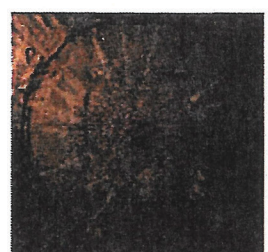
Base TD513 Orange Neon  
TD502 Galaxy Blue  
TD507 Seafoam



Base GS409 Purple Satin  
TD507 Seafoam  
TD508 Cherry Fizz



Base GS405 Rouge Red  
TD512 Pistachio  
TS513 Orange Neon



Base GS412 Black Satin  
TD502 Tidal Pool  
TD503 Galaxy Blue