

	IP202 Tree Bark	IP203 Golden Straw	IP205 Autumn Foliage	IP206 Sand & Surf	IP207 Steel Black	IP208 Winter Storm	IP211 Wormwood	IP212 Indigo
<b>Wiped Back</b>								
No Glaze								
under PG629 Super Clear								
under PG630 Zinc-Free Clear								
under GLW12 Eggshell Wash								

*The recommended and most common way of using Interactive Pigments.*

	IP202	IP203	IP205	IP206	IP207	IP208	IP211	IP212
<b>Used Over</b>								
GLW12 Eggshell Wash								
GLW32 Latte								

*As used with stamps or stencils, brushstroke work, and majolica painting techniques.*

	IP202	IP203	IP205	IP206	IP207	IP208	IP211	IP212
<b>Solid Coverage</b>								
No Glaze								
under PG629 Super Clear								
under PG630 Zinc-Free Clear								
under GLW12 Eggshell Wash								

*Not recommended for functional ware: solid color coverage may result in high metallic surface concentrations not suited for food or drink.*

**I**nteractive Pigments are incredibly versatile colors blended from natural pigments. You can use them “bare naked” in solid or wiped-back applications to enhance texture and design with “antiqued” effects.

The sample tiles on the other side of this page show basic ways of using Interactive Pigments with cone 6 clays and glazes. These Interactive Pigments can be used in any firing range from Low Fire (cone 06) through Mid Range (cone 6) and all the way up to High Fire (cone 10) and on any clay body. They will behave and interact differently with each clay body, firing temperature, and with each glaze ... so TEST them!

Used under glazes, either solid or wiped-back, they can produce a variety of effects which are determined by the chemistry of the glaze and how it interacts with the pigments. With clear glazes, the presence or absence of zinc in the glaze may dramatically change the fired results.

Under semi-transparent glazes, Interactive Pigments produce depths of color that may shade or enhance surface detail or texture you created. IPs work under semi-transparent or semi-opaque glazes, whether matte or gloss.

Interactive Pigments can be used “majolica style:” you can use them like inks or watercolors brushed onto opaque matte or gloss glazes before the glaze firing. Sumi-style natural hair brushes work best to apply Interactive Pigments with one stroke. Feel free to thin the pigments with water, if necessary to get your preferred consistency. You can also use the pigments with wax resist to create patterns and designs. You can also try enhancing the wax design by carving through the wax to create “in-line” channels for the pigments.

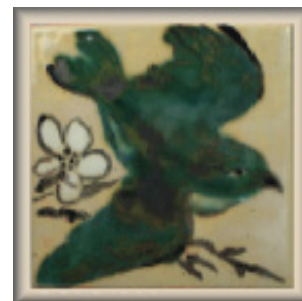
Food safety is a variable depending on your application, the glaze, and the intensity of the pigment in the glaze. When the surface of the glaze has a high metallic sheen, or when the pigmented surface looks dull (and your glaze without the Interactive Pigment doesn't look dull), these are clues that the finish will not be foodsafe. If you like these effects, keep them on the outsides of your vessels for decoration only.



IP212 Indigo stamped over GLW32 Latte, as GLW32 shows what it does with surface design!



IP208 Winter Storm in brushwork over GLW53 Yangtze Amber Crackle.



Majolica-style work with IP210 Winter Storm and IP212 Indigo over GLW32 Latte.